

Anti-KLK2 hIgG1 Antibody (Hu11B6)

Product information

GM-88129AB-10	10 µg
GM-88129AB-100	100 µg
GM-88129AB-1000	1 mg

Antibody Information

Species Reactivity	Human
Clone	Hu11B6
Source/Isotype	Monoclonal Human IgG1, κ
Application	Flow cytometry
Specificity	Detects KLK2
Gene	KLK2
Other Names	KLK2A2, hGK-1, hK2
Gene ID	3817 (Human)
Background	KLK2(Kallikrein-related peptidase 2) is an enzyme belonging to the serine endopeptidase family and has been implicated in the physiological and pathological processes of the human prostate. The gene is located in the human chromosome 17 and is highly expressed in prostate tissue. KLK2 has multiple functions in many physiological processes, including regulating endocrine, participating in spermatogenesis, affecting immune response, etc.
Storage	Store at 2-8°C short term (1-2 weeks).Store at ≤ -20°C long term. Avoid repeated freeze-thaw.
Formulation	Phosphate-buffered solution, pH 7.2-7.4.
Endotoxin	< 1 EU/mg, determined by LAL gel clotting assay

Data Example

Flow cytometry

H_KLK2 CHO-K1 Cell line (Catalog # GM-C41655) was stained with Anti-KLK2 hIgG1 Antibody (Hu11B6) (Catalog # GM-88129AB) or isotype control antibody, followed by anti-Human IgG APC-conjugated Secondary Antibody.

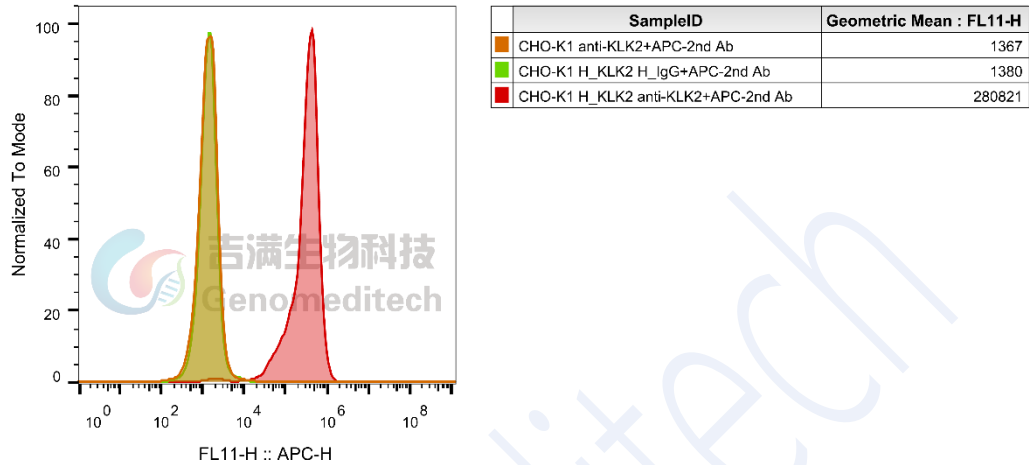


Fig. FACS